

Concrete Design - 7/2 - 3000 p.s.i. - 8200 lbs. cu. yd.

REVISED AS QUOTED 7-2-42

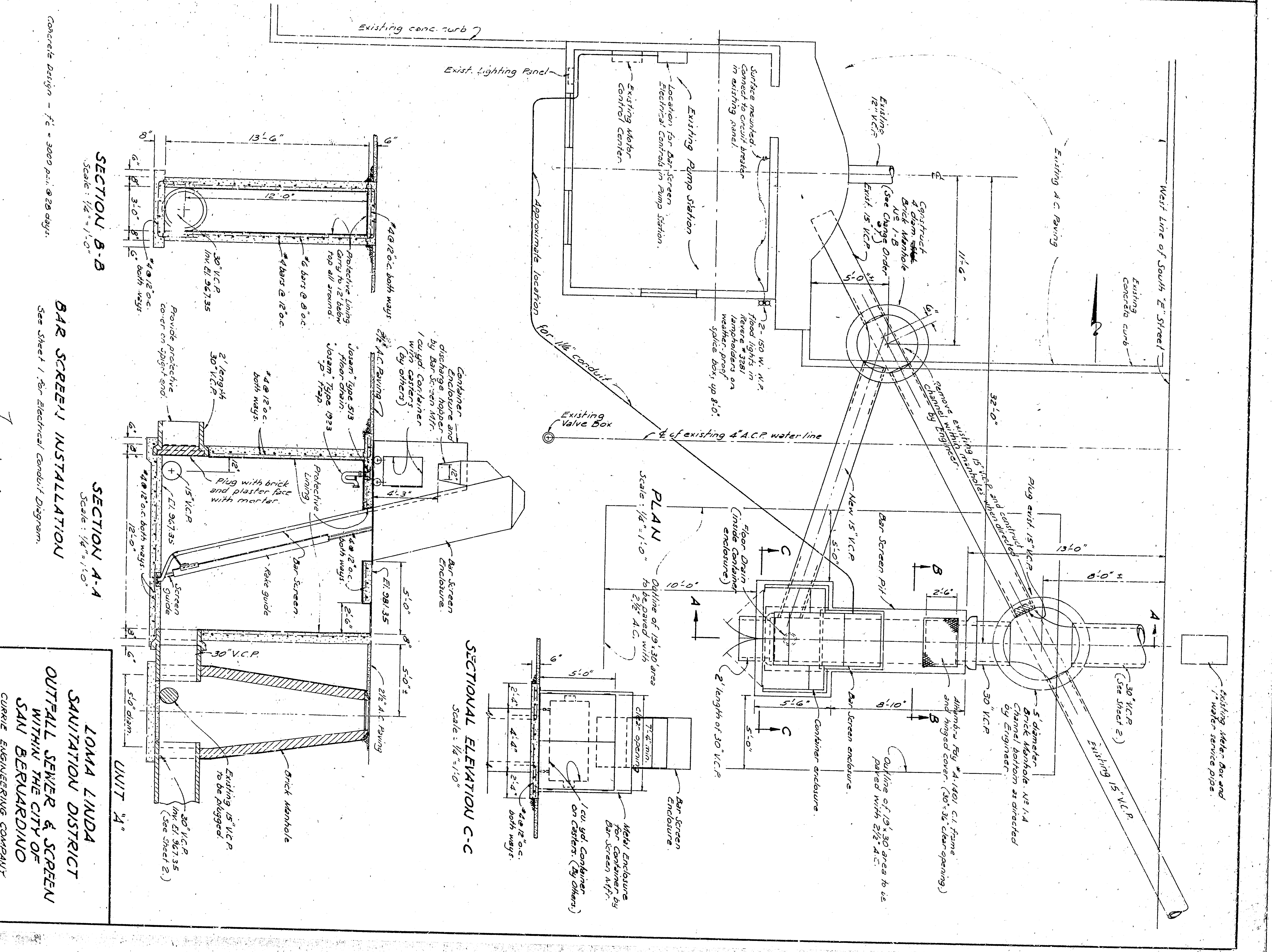
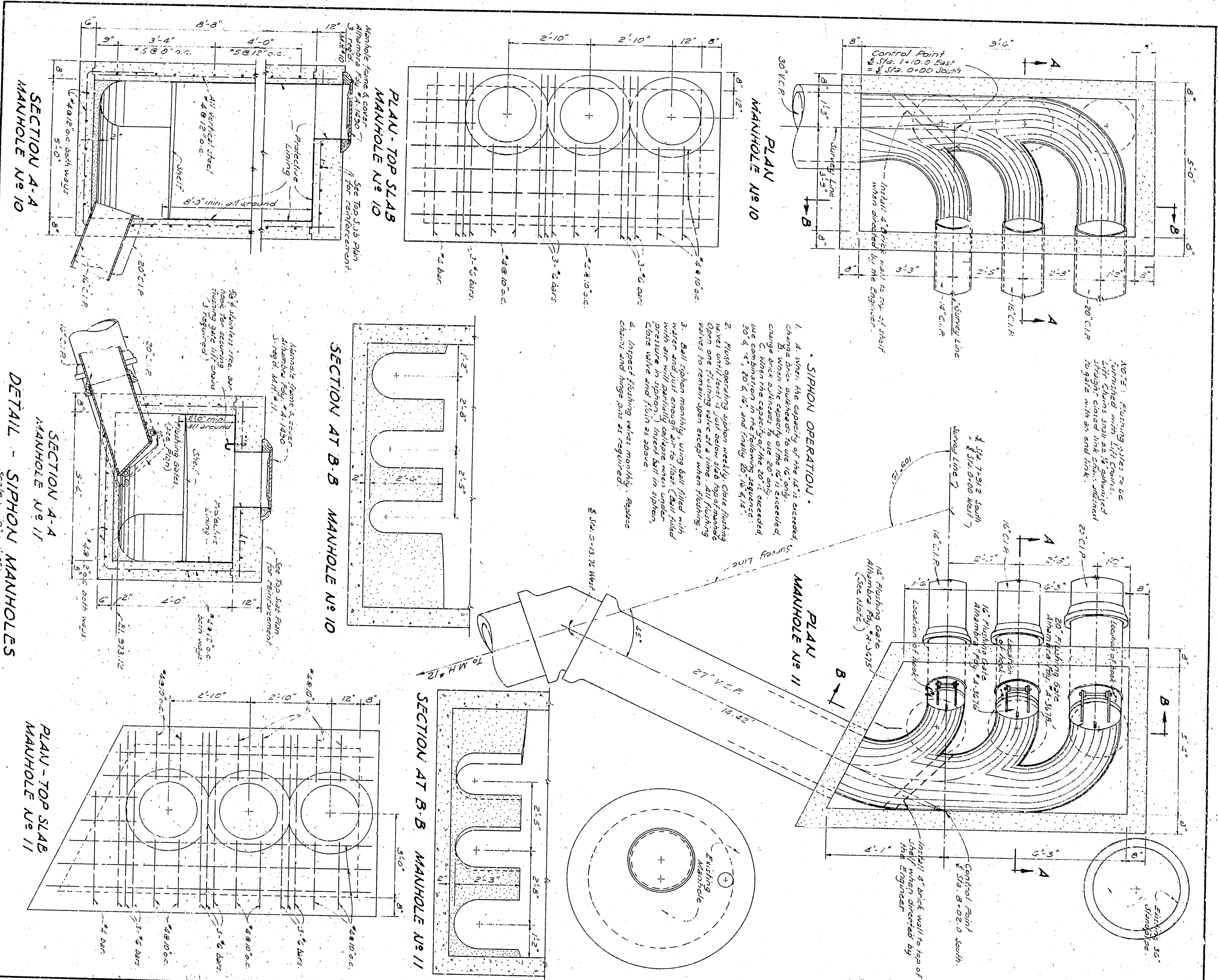
BAR SCREEN INSTALLATION

See Sheet 1 for Electrical Control Diagram

LOMA LINDA SANITATION DISTRICT  
 OUTFALL SEWER & SCREEN WITHIN THE CITY OF SAN BERNARDINO

CONCRETE ENGINEERING COMPANY  
 211-45 SOUTH GREEN AVENUE  
 PASADENA, CALIF.

DATE: 7-2-42  
 SHEET NO.: 10  
 OF: 15



Concrete Design - 7' x 3000 p.c. - 820 sq. ft.

REVISED AS QUOTED 7-2-42

BAR SCREEN INSTALLATION

See Sheet 1 for Electrical Control Diagram

CONCRETE ENGINEERING COMPANY

1004 LINDA SANITATION DISTRICT

OUTFALL SEWER & SCREEN WITHIN THE CITY OF SAN BERNARDINO

DATE 2-11-42

BY J. B. GREEN

CHECKED BY J. B. GREEN

SCALE 3/4" = 1'-0"